

COMPANY'S LOGO

⟨MATERIALS⟩

- PLYWOOD
- MDF
- SOLID WOOD
- MISCELLANEOUS
- WALL

⟨FINISHES⟩

- WD-1 WHITE MATTE LACQUER EXTERIOR
- WD-2 SHINNOKI SAND ASH EXTERIOR
- SS-1 CEASEARSTONE
- NT-1 CLEAR MAPLE INTERIOR

⟨HARDWARE⟩


- H-1 Blum CLIP top Standard Hinge 120°
- H-1 Unsprung INSERTA 7075590BTL
- H-2 Blum TIP-ON Adapter Plate: TIP-ON Long 955A1004 and TIP-ON Short 955.1004
- H-3 Drawer Slides: TANDEM PLUS Set, Full Extension, Tip-on mechanism included
- H-4 Shelf Support Custom Metal Bracket
- H-5 U-channel, color - TBD

⟨BY OTHERS⟩

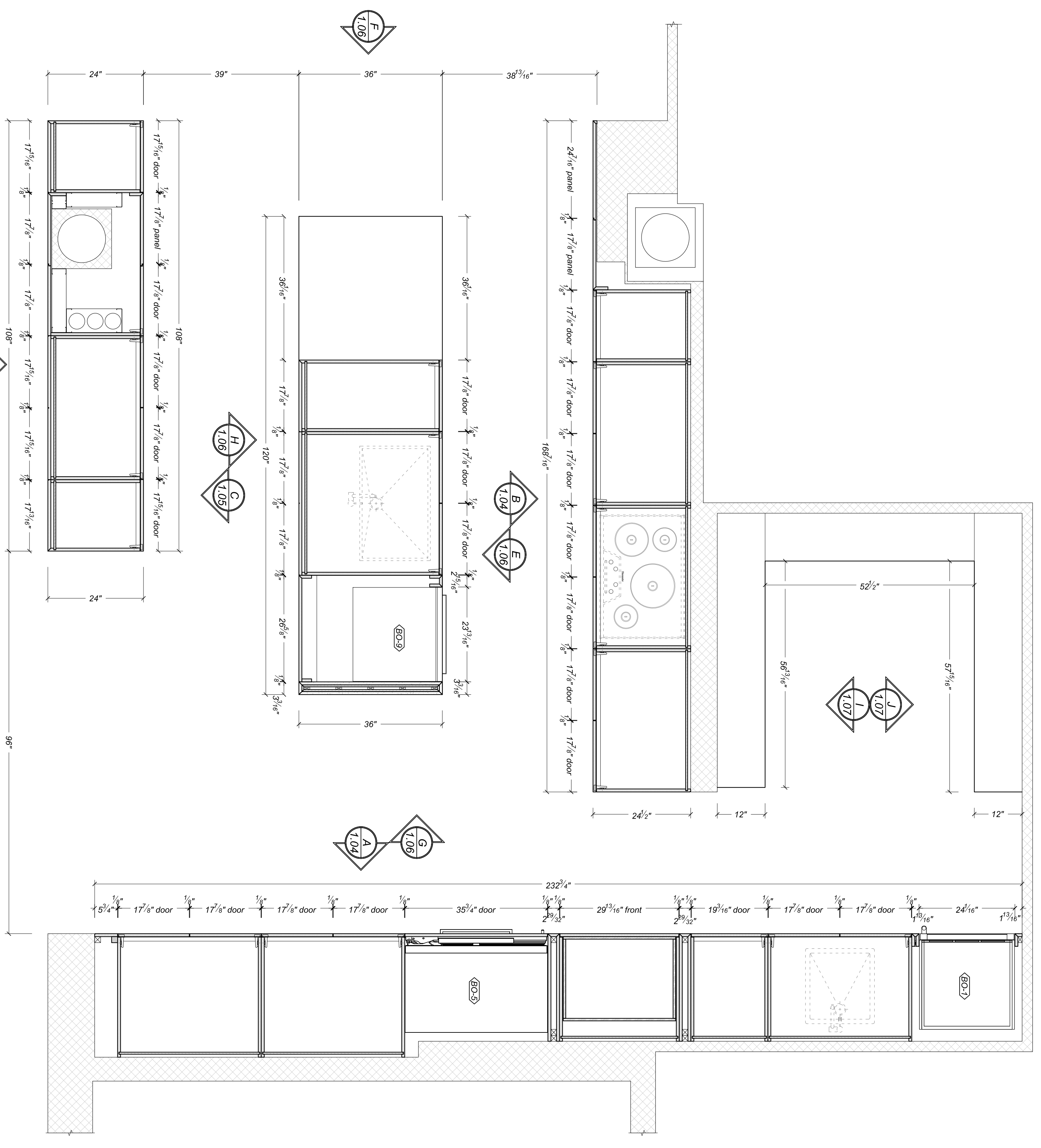
- BO-1 Sub zero Wine Storage424G-O
- BO-2 Sink Franke Planar Zero 210 44
- BO-3 Miele Convection Oven H 6280 BP
- BO-4 Miele Pureline Speed Oven H 6200 BM
- BO-5 Miele 36" Fully Integrated Refrigerator
- BO-5 KF-19.3
- BO-6 Thermador 30" Masterpiece Induction Cooktop C17304KM
- BO-7 Miele Built-in Hood DA 3490
- BO-8 Fireplace - TBD
- BO-9 Miele Futura Classic Plus Dishwasher G 4975 SCVI
- BO-10 Sink Franke Planar 8 Series, Pex 110-28 Faucet - TBD

CLIENT'S ADDRESS

ROOM: KITCHEN & PANTRY

N	DATE	DRAWN BY	FOR APPROVAL/REVISION
1	05/20/2016	 GDI Engineering	FOR APPROVAL

SCALE: AS NOTED @ ARCH D
DWG #: 1.01



SECTION
PLAN @ KITCHEN & PANTRY
P1
SCALE: 3/4"=1'-0"